

Pacific High Lift Hoists

The Pacific High Lift Hoists are designed with a unique angled 10 pocket wheel to allow high hoisting speeds at a 40% duty cycle. Capacities range from 125kg to 1000kg and all hoists are fitted with overload protection for added safety. Height of lift can be customised up to 80 meters which makes this hoist suitable for very specific industry applications.



Features:

- All Pacific High Lift Hoists are manufactured to comply with AS1418.2
- Unique design: angled 10 pocket wheel for smoother operation
- All models 3 phase 415V single speed
- Available in 125kg, 250kg, 500kg and 1000kg capacities
- 24V low volt control for operator safety
- Duty cycle rated at 40% ED with 180 starts per hour
- 20 m/min single speed
- IP65 pendant control
- Overload protection - using slipping clutch to prevent overload
- Raise + lower limit switch
- Supplied with 2 mtr pendant and 3 mtr power load as standard
- Hoist having optional:
 - Motorised Trolley
 - Customised lift
 - Chain bucket
 - Chain bucket suspension trolley
 - Juuko radio remote control
 - Customised beam width

The information shown is to be used as a guide only. Specifications are subject to change without notice. All materials handling or lifting jobs should be assessed individually. Pacific Hoists products are NOT to be used for lifting or lowering persons.

Specifications

High Lift Hoists - 415V, 3 ph

*24V Control Voltage for operator safety.

| Model | | PHL012 | PHL025 | PHL050 | PHL100 | |
|-------------------------------|---------------------|--------------|--------------|--------------|--------------|----------|
| Stock Code | | PHL012 | PHL025 | PHL050 | PHL100 | |
| Rated Capacity (kg) | | 125 | 250 | 500 | 1000 | |
| Standard Lift Height (m) | | Up to 80 | | | | |
| Load Chain (Dia X pitch (mm)) | | Ø 4.0 x 12.0 | Ø 6.3 x 19.1 | Ø 7.1 x 20.2 | Ø 8.0 x 24.0 | |
| Hoisting | Speed m/min | 50Hz | 20 | 20 | 20 | 10 |
| | Motor (kW) / (Pole) | 50Hz | 6.0 x 2P | 1.6 x 2P | 2.5 x 2P | 2.5 x 2P |
| E.D. Rating (%) | | 40 | | | | |
| Load Chain Fall No. | | 1 | | | | |
| N.W. (G.W.) (kg) | | 58 / 60 | 111 / 113 | 145 / 148 | 145 / 148 | |

Trolley

| Model | | PHT012 | PHT025 | PHT050 | PHT100 |
|-------------------------|------|-----------|-----------|-----------|-----------|
| Stock Code | | PHT012 | PHT025 | PHT050 | PHT100 |
| Speed m/min | 50Hz | 20 | | | |
| Motor Power (kw) (Pole) | | 0.12 x 2P | 0.12 x 2P | 0.18 x 2P | 0.18 x 2P |
| N.W. (kg) | | 45 | | | |
| Min radius of curve (m) | | 1.3 | | | |

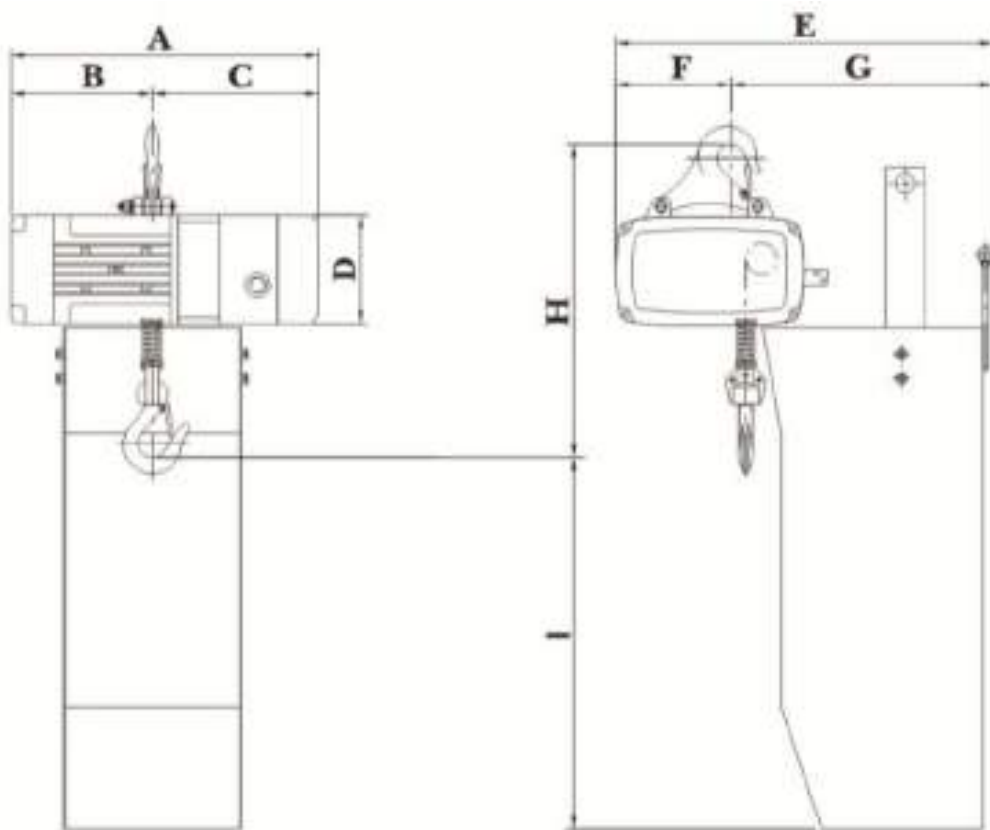
*Different flange with options available on request.

The information shown is to be used as a guide only. Specifications are subject to change without notice. All materials handling or lifting jobs should be assessed individually. Pacific Hoists products are NOT to be used for lifting or lowering persons.

Dimensions (in mm)

Hoist

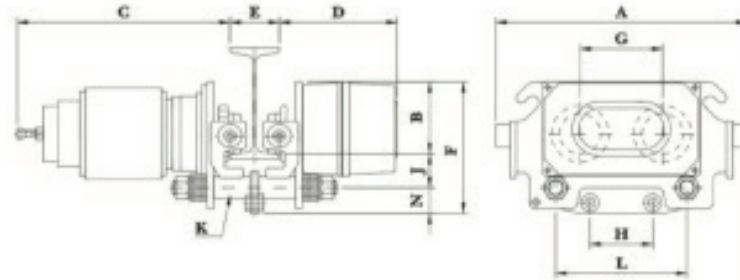
| Model | PHL012 | PHL025 | PHL050 | PHL100 |
|-------|--------|--------|--------|--------|
| A | 380 | 468 | 488 | 488 |
| B | 175 | 221 | 240 | 240 |
| C | 205 | 247 | 248 | 248 |
| D | 135 | 156 | 170 | 170 |
| E | 472 | 534 | 554 | 624 |
| F | 143 | 186 | 188 | 188 |
| G | 329 | 353 | 366 | 436 |
| H | 376 | 485 | 520 | 520 |
| I | 460 | 701 | 710 | 750 |



The information shown is to be used as a guide only. Specifications are subject to change without notice. All materials handling or lifting jobs should be assessed individually. Pacific Hoists products are NOT to be used for lifting or lowering persons.

Dimensions (in mm)

Trolley



| Model | PHT012 | PHT025 | PHT050 | PHT100 |
|-------|-----------|--------|--------|--------|
| A | 382 | | | |
| B | 124.5 | | | |
| C | 324 | | | |
| D | 180 | | | |
| E | 75 - 125 | | | |
| F | 217 | | | |
| G | 125.5 | | | |
| H | 120 | 95.5 | 120 | 120 |
| L | 200 | | | |
| J | 51.5 | | | |
| N | 41 | | | |
| K | 7/8"-9UNC | | | |

Sydney - Head Office

24 Foundry Road
Seven Hills, NSW 2147
Australia

+61 (0)2 8825 6900

+61 (0)2 8825 6999

Western Australia

Unit 1, 31 Colin Jamieson Drive
Welshpool, WA 6106
Australia

+61 (0)8 6253 1000

+61 (0)8 9458 9840

Auckland NZ

11 Druces Road
Wiri, Auckland 2104
New Zealand

+64 (0)9 263 5566

+64 (0)9 263 5567

